

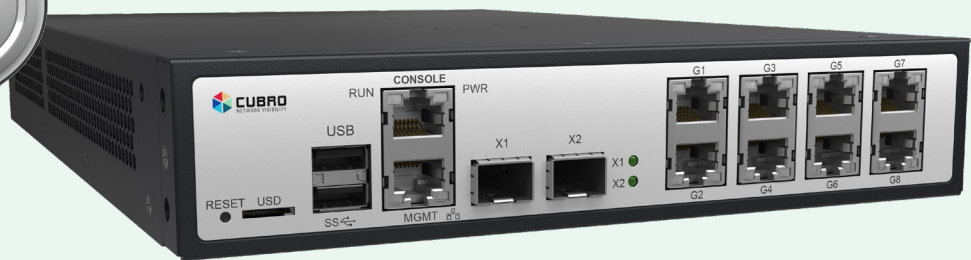
APPLICATION NOTES

# EXA8 LI APPLICATION

March 2019



## EXA8 LAWFUL INTERCEPTION (LI) APPLICATION



### EXA8 AS ETSI COMPATIBLE LI DEVICE

- The integrations are based on ETSI standards but implemented with ad-hoc protocols per Mediation Partner (G2K, UTIMACO) owning the LEA Connectivity and protocol definition.
- The specs will depend on the territory and the technologies and what partners support - the geographic region in question.
- It runs on the EXA8 and it's completely invisible. There will be a UI but it is not mandatory at all. It is just used once by the Mediation party to set their endpoints and port ranges.
- Once connected to the Mediation boxes, the configuration of LI is remotely done by the Law Enforcement. The operator sees nothing with the exception of the authorized LEA personnel.

#### Business Benefit

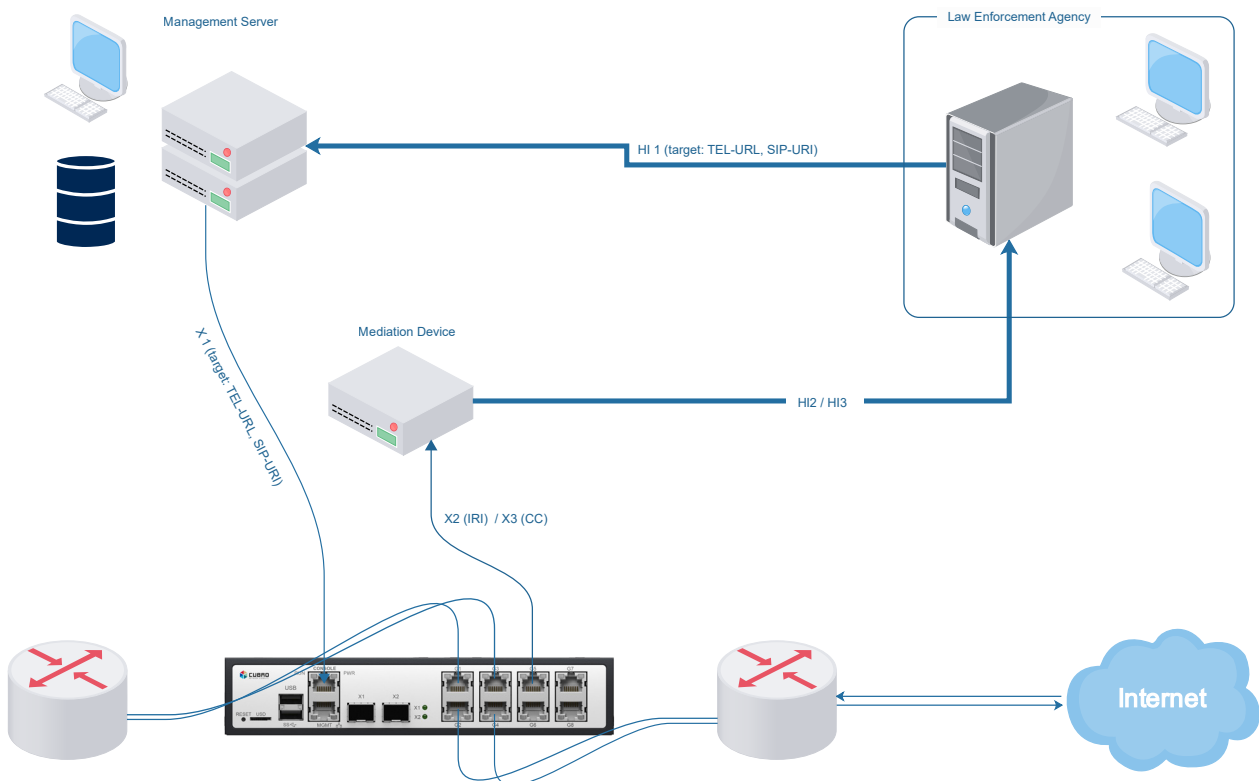
Lawful intercept application is required by service providers to meet government mandated legal requirements. The challenge for service providers has been to cost-effectively meet lawful intercept requirements. In most cases, the software and hardware are from different vendors which means it is time-consuming and expensive to deploy the application, maintain and run it smoothly. EXA8 for LI application bridges this gap and provides both hardware and software solution which is certified. The solution is compliant to regulations and supports VOIP.

**Key Features:**

- Hardware and software in one box – plug & play
- EXA8 small form factor and low price, powerful CPU and in-built TAP. The software is certified, tested and stable. Together, it offers excellent value for money.
- EXA8 is the only solution with hardware and software as a package
- Easy maintenance
- Accelerate deployment time, no complexity in deploying the software

**Technical Specifications:**

- Cavium ARM64 CPU 16GB RAM
- Internal and external SSD Storage
- 8x 1G Copper, 2x 10G SFP+ Ports
- 4x Integrated Cubro TAPs (Passive)
- 1U ½ 19" Metal Housing w/ Dual PSU


**For more information contact us:**
**Cubro EMEA**
[support@cubro.com](mailto:support@cubro.com)
**Cubro APAC**
[jl@cubro.com](mailto:jl@cubro.com)
**Cubro Japan**
[japan@cubro.com](mailto:japan@cubro.com)
**Cubro North America**
[americas@cubro.com](mailto:americas@cubro.com)