




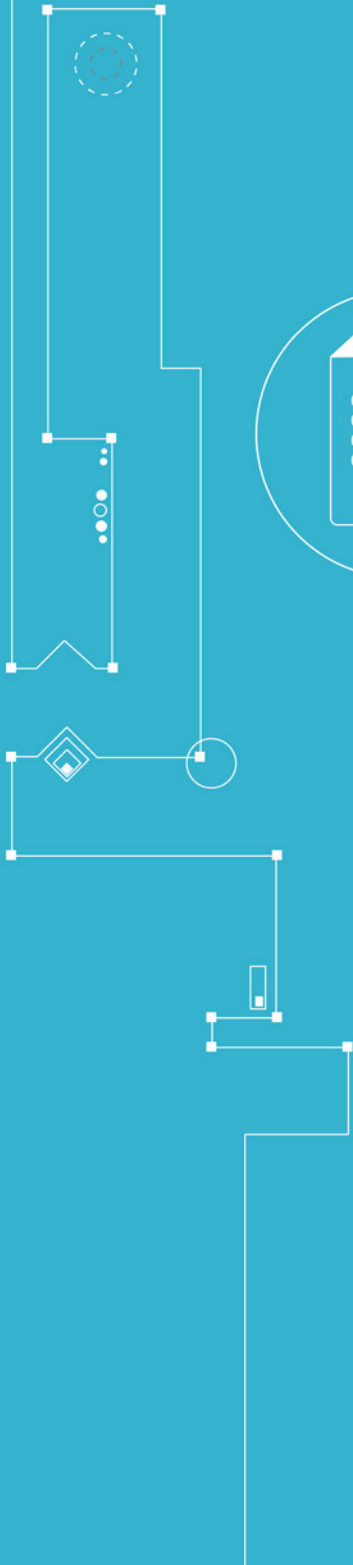
CUBRO
NETWORK VISIBILITY

EXA64100



```
01001011101
00010010001
00100100001
01001001010
```

DATA SHEET



Advanced Network Packet Broker At a glance

Definition

An Advanced Network Packet Broker is a switch-like device purpose-built to receive traffic from a variety of network sources (live link, TAPs, SPANs, mirror ports) and to filter, duplicate, and/or aggregate that traffic to monitoring and security tools.

Advantages of EXA64100

- Filter and load-balance traffic from 10, 25, 40 or 100 Gbps links to multiple monitoring tools
- Aggregates multiple 10 Gbps links to 25, 40, or 100 Gbps monitoring tools
- 64 x 40/100 Gbps (QSFP/QSFP28)
- QSFP28 ports support breakout to 4 x 10/25G
- Supports data burst buffering
- Packet slicing support (any configurable packet size)
- IPv6 support
- Tunnel header stripping
- No additional port licensing fees or software feature licensing. All features and applications included in the unit price.
- 2-year base warranty period

Product Overview



The EXA64100 is a high-performance advanced network packet broker that aggregates, filters, duplicates, and load balances network traffic to security, monitoring and management tools. The EXA64100 is based on programmable switching fabric. It is based on an advanced multi-core, industry leading programmable switch chip architecture. This platform allows all filtering features to be implemented at the hardware level for unmatched throughput and performance. The EXA64100 enables high-performance deep protocol identification and processing, and data message pre-processing at the chip forwarding logic level. The multi-layer filtering capabilities of the EXA64100 is a powerful feature of this device which enables enhanced network visibility and better network performance.

Functions / Benefits:

- Easy to configure: secure Web GUI / ReST API
- Load balancing: hash-based, session aware load balancing on either outer or inner tunnel headers
- Ultra high port density: supports up to 64 x 40/100 Gbps or 256 x 25/10 Gbps ports
- Filtering on multiple parameters including inner tunnel filtering (VXLAN, GTP, ERSPAN, etc)

Product Capabilities / Features

Link/Port Aggregation	Aggregation many to any, and any to many at all link speeds
100G distribution/load balancing	Traffic can be easily distributed across 10G, 25G, and 40G links to monitor highly loaded 100 Gbps links.
Jumbo Frame Support	The Sessiomaster supports jumbo Ethernet frames with a size of up to 9192 bytes.
Support of IPv4 and IPv6	Yes
Ports	64 x QSFP 40 Gbps or QSFP28 100 Gbps 1 x 10/100/1000 Base-T (Management) 1 x RS232 Console
Configuration Communication	/ Web GUI, REST API
Performance	12,8 Tbps backplane 100 % throughput without any packet loss
Aggregation latency	Average < 700 ns for 64-byte frames
MTBF	200.742 hours
Packet Buffer	22 MB
Different Power Versions	Dual 100-240 V AC or 36-72 V DC available

Technical Data / Specifications

Inputs*

64 x 40 Gbps / 100 Gbps full duplex Ports for any kind of QSFP/QSFP28

* Each port can be input and / or output depending on the application and configuration

*All QSFP/ QSFP 28 ports support breakout cables to 4x10G or 4x25G interfaces

Outputs*

64 x 40 Gbps / 100 Gbps full duplex Ports for any kind of QSFP/QSFP+

* Each port can be input and / or output depending on the application and configuration

*All QSFP/ QSFP 28 ports support breakout cables to 4x10G or 4x25G interfaces

A circular icon containing a document with binary code (01001011101, 00010010001, 00100100001, 01001001010) on it.

01001011101
00010010001
00100100001
01001001010

Performance

- Performance up to 12,8 Tbps
- Non-blocking design
- Boot time from power on to working 180 sec

Management

- Management Port: (1) RJ45 10/100/1000 Mbit Configuration
- Easy to use Web UI

Operating specifications:

Operating Temperature: 0°C to 40°C
Storage Temperature: -10°C to 70°C
Relative Humidity: 10% min, 95% max (non-condensing)

Mechanical specifications:

Dimension (WxDxH): 442 x 590 x 88 mm
Weight: 16 kg
Airflow: Front-back

Electrical specifications:

Input Power: 100-240 V AC or 36-72 V DC
Maximum Power Consumption: 350W

Certifications:

Fully RoHS compliant
CE compliant
Safety - UL 60950-1 / CSA C22.2 60950-1-07 / IEC 60950-1 (2005) EN 60950-1 (2006)



01001011101
00010010001
00100100001
01001001010

Ordering Information

Product Components:

- Cubro EXA64100
- AC/DC power supply
- European power cord
- Transceivers not included

Part Number	Description
CUB.EXA64100	EXA64100 Advanced Network Packet Broker, 64x40/100G, AC power supply
CUB.EXA64100-DC	EXA64100 Advanced Network Packet Broker, 64x40/100G, DC power supply

For more information please check our website www.cubro.com.