

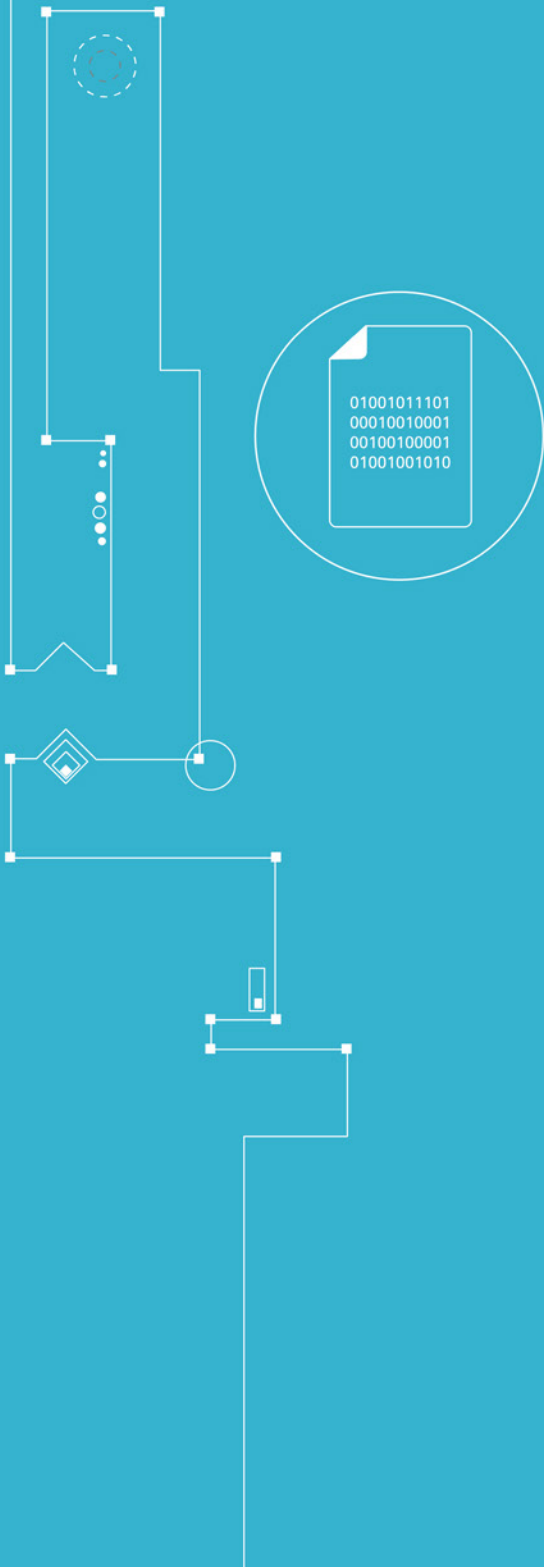


CUBRO
NETWORK VISIBILITY

CONVERTER TAP



DATA SHEET



Network TAP At a glance

Definition

A network TAP (test access point) is an external monitoring device that mirrors the traffic that passes between two network nodes. A TAP is a hardware device inserted at a specific point in the network to monitor data.

Advantages of Converter TAP

- Minimum failover and zero downtime
- Provides complete traffic visibility and access to any network connection.
- Cost effective
- Easy to install
- Flexible
- Can be used to amplify link signal (R version)

Product Overview



The Cubro Converter TAP is a flexible solution to convert interfaces for tapping purpose. The Converter TAP is available in 2 different versions, fixed optical link ports (SM or MM) with SFP monitor ports or SFP Link ports with fixed monitor ports (SM or MM). The second one is called R version.

Each of these 2 versions are available in 1 G and 10 G Ethernet traffic speed.

The Converter TAP with fixed link ports has a fully passive network connection, so that the network link will not be influenced even if the unit is disconnected from power. The network path is fully fault transparent.

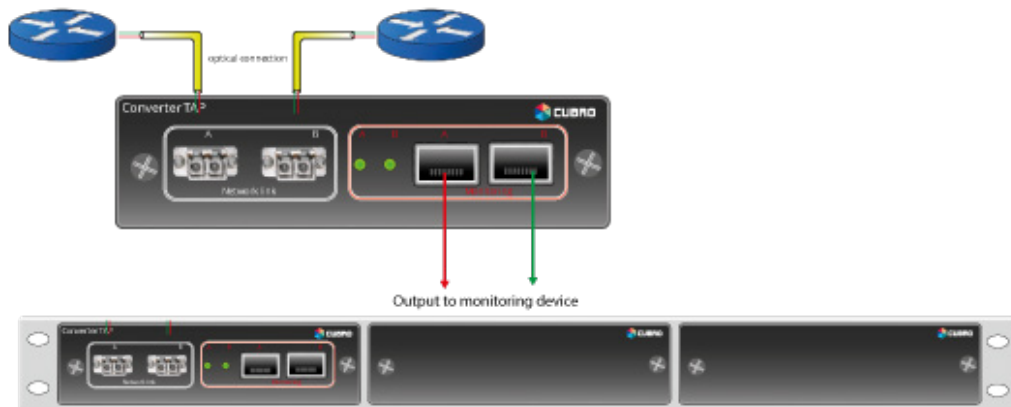
The units can be used with Copper, Optical SFPs/SFP+ or Direct Attach cables.

The SFPs give great flexibility to choose the right interface for your applications (SFPs are not included).

The path from input to the output ports is fault-transparent. If the link on input port is going down, the output ports follow with a short delay. The path from input to the output ports is layer 1 to layer 7 transparent. Any error on the link ports will be copied to the right monitoring ports.

Functions / Benefits:

- The Cubro Converter TAP helps in saving on access points when multiple devices can monitor link traffic simultaneously through a single Regeneration TAP.
- The Cubro Converter TAP passes all traffic (including errors) from all layers for comprehensive troubleshooting because the path from input to the output ports is layer 1 to layer 7 transparent
- Up to 3 units can be mounted in the optional 19" rackmount kit, see graphic below.



Product Capabilities / Features

Link Ports	Standard: LC connector (SM or MM) R Type: optical (SM or MM), copper SFP or SFP+(10G version)
Monitor ports	SM, MM
Fault Propagation	If the link on the input port is going down, the output ports will follow with a short delay.
LED Indicators	LEDs on the front panel indicate power and signal status.
Power	12V DC supply with or without redundancy Power dissipation: 7.5W
Propagation Delay (In to Out)	0.7 ns only
MTBF	198185 hours
Operating Temperature	0 to 55°C
Operating Humidity	80% maximum relative humidity
Physical Dimensions (H x W x D)	3 x 11,2 x 17-cm 1,8 x 4,4 x 6,7-in
Rugged Aluminum Housing	Stable Aluminum Housing with precise connector labeling on front panel. 19" Rack mount kit also available

Ordering Information

Product Type & Number	Description
CBR.CONV-1-MM-R3	Converter TAP, 1 Link 1000 Base-SX (MM) LC connector, 2 SFP Monitor Ports 1000M; 1/3 19" rackmount housing (rackmount kit not included)
CBR.CONV-1-SM-R3	Converter TAP, 1 Link 1000 Base-LX (SM) LC connector, 2 SFP Monitor Ports 1000M; 1/3 19" rackmount housing (rackmount kit not included)
CBR.CONV-R-1-MM-R3	Converter TAP R version, 1 Link 1000M (2 x SFP) , 2 x 1000 Base-SX (MM) Monitor Ports; 1/3 19" rackmount housing (rackmount kit not included)
CBR.CONV-R-1-SM-R3	Converter TAP R version, 1 Link 1000M (2 x SFP) , 2 x 1000 Base-LX (SM) Monitor Ports; 1/3 19" rackmount housing (rackmount kit not included)
CBR.CONV-10-MM-R3	Converter TAP, 1 Link 10G Base-SX (MM) LC connector, 2 SFP Monitor Ports 10G; 1/3 19" rackmount housing (rackmount kit not included)
CBR.CONV-10-SM-R3	Converter TAP, 1 Link 10G Base-LX (SM) LC connector, 2 SFP Monitor Ports 10G; 1/3 19" rackmount housing (rackmount kit not included)
CBR.CONV-R-10-MM-R3	Converter TAP R version, 1 Link 10G (2 x SFP) , 2 x 10G Base-SX (MM) Monitor Ports; 1/3 19" rackmount housing (rackmount kit not included)
CBR.CONV-R-10-SM-R3	Converter TAP R version, 1 Link 10G (2 x SFP) , 2 x 10G Base-LX (SM) Monitor Ports; 1/3 19" rackmount housing (rackmount kit not included)
CBR.RM19-3	Cubro 19" Rackmount Kit for 3x 1/3 19" units

For more information please check our website www.cubro.com.