



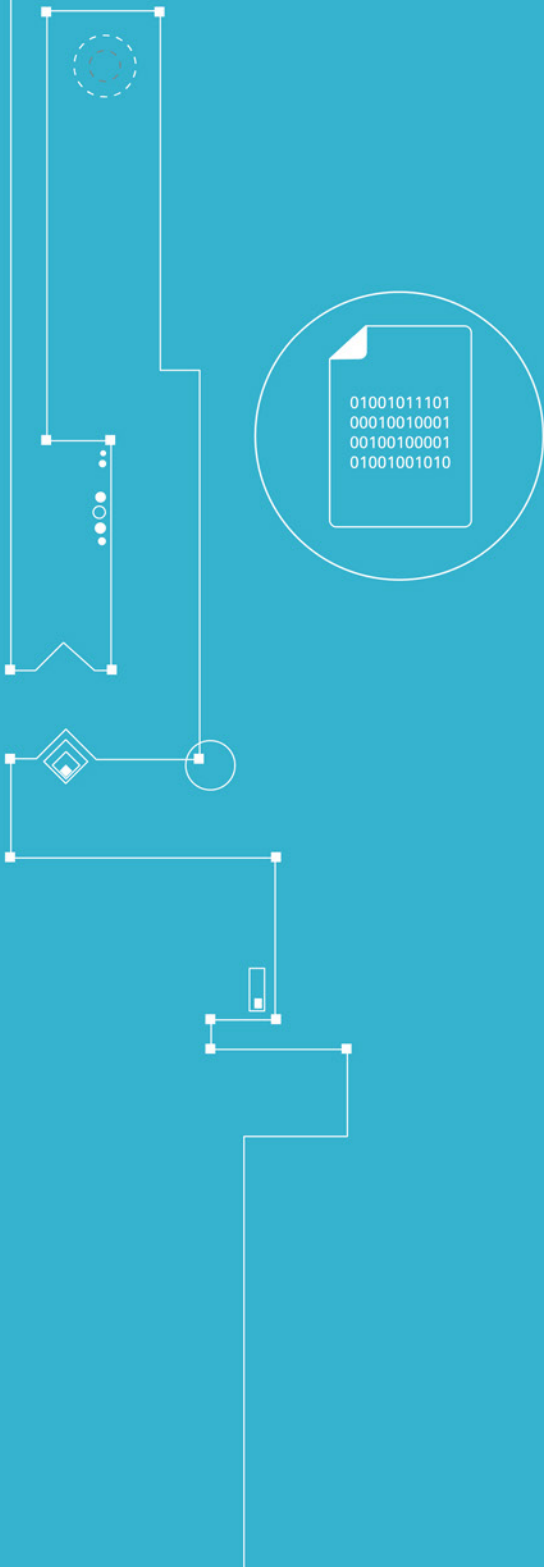
**CUBRO**  
NETWORK VISIBILITY

# BREAKOUT BOXES



---

**DATA SHEET**



## Functions / Benefits:

- High density
- Exceptional quality and construction
- Supports up to 100G
- Low insertion loss
- Completely passive
- Fail-safe
- Reduce cable clutter
- Maximize efficiency of MTP ports on devices

## Applications:

- Telecommunications providers
- ISPs and other service providers
- Data centers
- Large networking deployments
- Test equipment, testing labs

## Product Overview



The Cubro Breakout Box is a 1/3 RU passive optical device that splits an MTP link out to its constituent 4 fiber pairs with LC connectors. The Cubro Breakout Box is constructed in a 1/3 RU chassis, the same form factor as our acclaimed OptoSlim TAPs, and is built and tested to the same rigorous standards as all our optical TAPs. The Breakout Box is available in Single Mode and Multi-Mode (50/125  $\mu$ ) versions and two different port densities. Breakout Boxes can be used with 2 MTP connectors that break out to 16 LC connectors or with 4 MTP connectors that break out to 32 LC connectors. All models are tested to handle data rates up to 100G.

Similar to optical TAPs, these devices are completely passive and fail-safe, requiring no power. They are transparent and do not alter network traffic in any way. There is only a small amount of insertion loss introduced by the Breakout Box. The unique form factor of Cubro's Breakout Boxes allows for exceptional port density as it is possible to break out 12 MTP (96 individual fibers or 48 fiber pairs) connections in a 1RU space. Using breakout boxes at key points in your installation can drastically simplify fiber runs and reduce cable clutter. Combining Cubro's Breakout Boxes with Cubro's Optoslim TAPs of the same form factor further enhances flexibility and customization.

The Breakout Box can be used to combine multiple monitor links from a LC TAP into an MTP connection to be sent to a Network Packet Broker's MTP/MPO QSFP connections freeing up SFP ports for other uses and reduced cabling.

## Performance Specifications

Parameter	Unit	LC		MTP	
		SM	MM	SM	MM
Operating Wavelength	nm	1310,1550	850,1300	1310,1550	850,1300
Insertion Loss typical	dB	≤0.2dB	≤0.2dB	≤0.2dB	≤0.2dB
Insertion loss maximum	dB	≤0.5dB			
Return Loss	dB	≥50dB	≥35dB	≥45dB	≥20dB
Operating temperature	°C	-40 to +75			

## Ordering Information

Product Type & Number	Description
CUB.BREAKBOX-8P-SM-MT	Breakoutbox Singlemode 2x (8 Ports LC to 1 MTP connector), 19" 1/3U height
CUB.BREAKBOX-8P-MM-MT	Breakoutbox Multimode 2x (8 Ports LC to 1 MTP connector), 19" 1/3U height
CUB.BREAKBOX-16P-SM-MT	Breakoutbox Singlemode 4x (8 Ports LC to 1 MTP connector), 19" 1/3U height
CUB.BREAKBOX-16P-MM-MT	Breakoutbox Multimode 4x (8 Ports LC to 1 MTP connector), 19" 1/3U height

For more information please check our website [www.cubro.com](http://www.cubro.com).