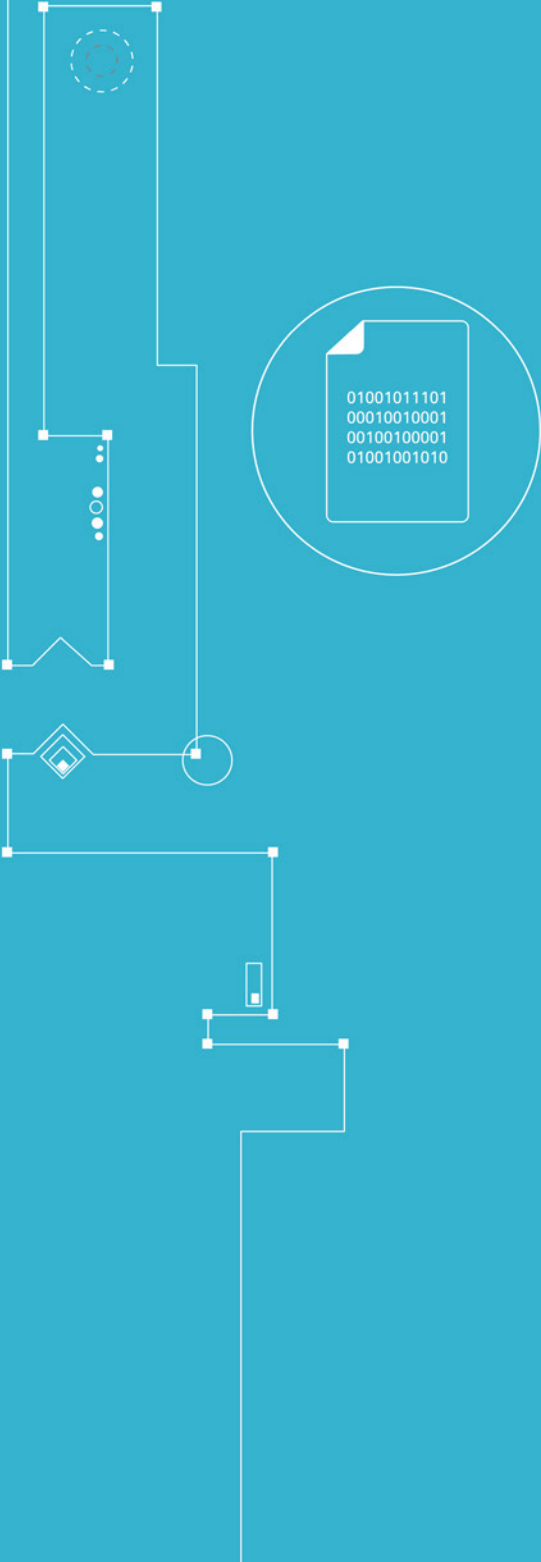




**CUBRO**  
NETWORK VISIBILITY



# BIDI TAP

## DATA SHEET

**Published at Cubro, September 2024**

Please refer to the latest version of this document on our website to ensure you have the most up-to-date information.

## Network TAP At a glance

### Definition

A network TAP (Test Access Point) is an external monitoring device that mirrors the traffic that passes between two network nodes. A TAP is a hardware device inserted at a specific point in the network to monitor data.

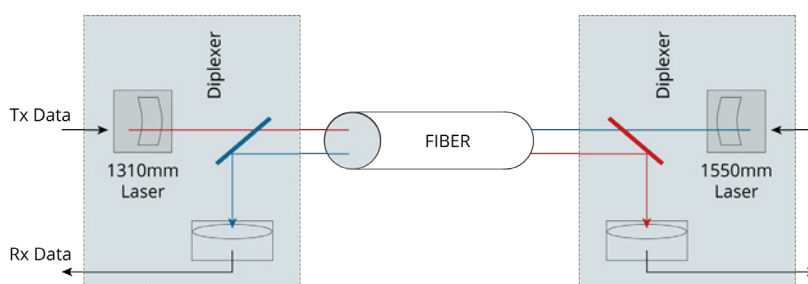
### Advantages of BiDi TAP

- Provides visibility to BiDirectional traffic
- Full transparency, adds no delay
- Makes 100% copy of network data allowing the monitoring tools to see every bit, byte and packet
- No power supply needed, completely passive
- Cost-effective
- Low insertion loss
- Flexible and scalable
- Every used splitter inside the optical BiDi TAP is carefully handled

## Product Overview



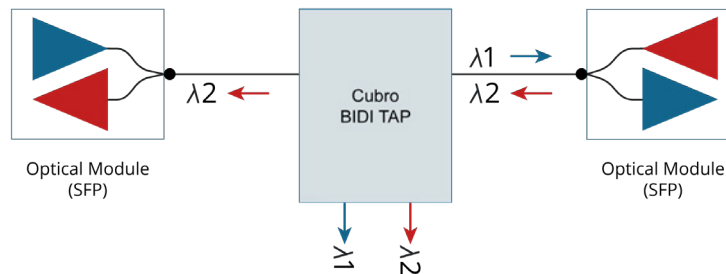
Cubro BiDi TAPs provide visibility to BiDirectional links. The TAPs export monitored traffic gathered from two transmitted signals, providing complete coverage for analytic and security tools. There are new smart concepts of tapping a link with two different wavelengths over the existing infrastructure with BiDi SFP which transports up to 10 Gbit duplex over only one fibre. A BiDi link uses one fibre to build a duplex link and helps to reduce costs (See Figure 1).



How BIDI link works

Fig. 1

It is a challenge to tap such links, but Cubro can provide a solution to tap such a link and break it down into each signal with the use of the Packetmasters (See Figure 2).



How BIDI TAP works

Fig. 2

The TAP, fully passive, is completely transparent and adds no delay to the network.

## Functions / Benefits:

- The Cubro TAP works with each combination of BiDi SFP on the market
- Up to 3 BiDi TAPs can be mounted in one 19" rackmount kit which can be acquired optionally

## Product Capabilities / Features

Tapping BiDi optical fibres	One link two fibres to two outputs
Fault Propagation	If the link on the input port is going down the output ports will follow with a short delay.
LED Indicator	No LED
No Power Needed	Fully passive
Propagation Delay (In-Out)	No delay at all
MTBF	N/A
Operating Temperature	0 to 55°C
Operating Humidity	80% maximum relative humidity
Physical Dimensions (H x W x D)	3 x 11,2 x 17 cm 1,8 x 4,4 x 6,7 in
Rugged Aluminium housing	Stable aluminium housing with precise connector labelling on the front panel. 19" Rack mount kit also available



01001011101  
00010010001  
00100100001  
01001001010

## DATA SHEET | BiDi TAP



**CUBRO**  
NETWORK VISIBILITY

## Ordering Information

Product Type & Number	Description
CBR.BiDi-SM-1-R3	Optical BiDi TAP SM, 1 Link SM LC-duplex, Monitor Ports SM LC duplex; 1/3 19" rackmount housing (rackmount kit not included)
CBR.RM19-3	CUBRO 19" Rackmount Kit for 3x 1/3 19" units

For more information please check our website [www.cubro.com](http://www.cubro.com)